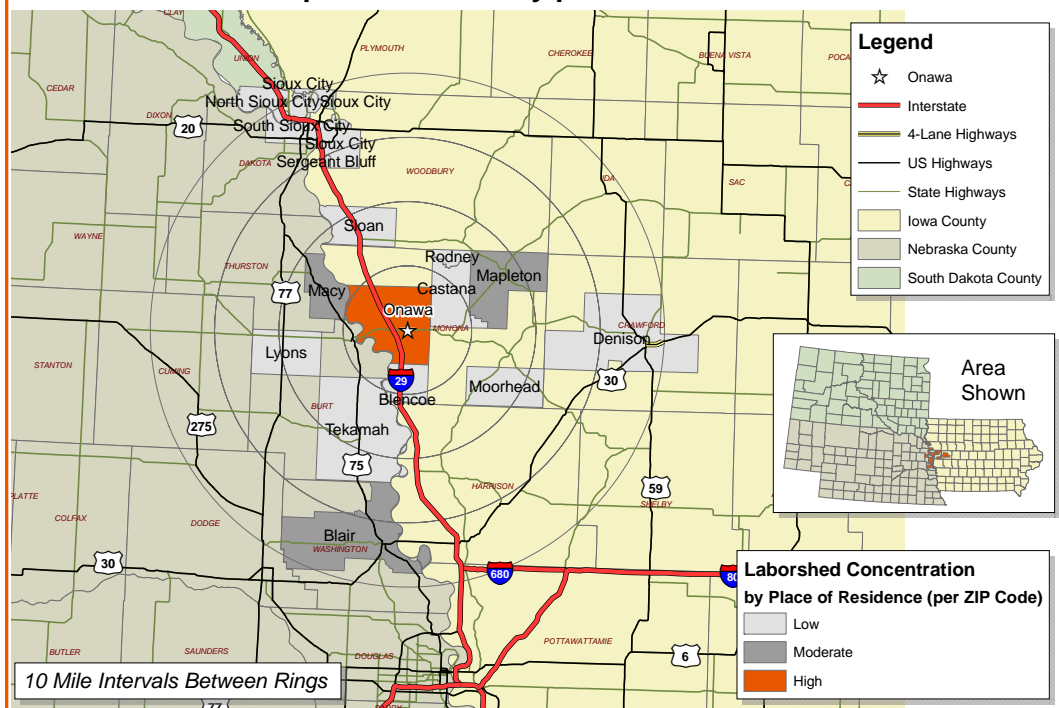


Labor Characteristics

Entertainment, Recreation, & Personal Service Monona County, IA



Concentration of those with transferable experience/skills by place of residence



Workers who have transferable experience/skills are currently commuting an average of 11 miles one way for work. Those who are willing to change/accept employment are willing to commute an average of 21 miles one way for the right employment opportunity.

Employment Status:

76.2% Employed

- 30.0% of the employed are willing to change employment

14.2% Unemployed

- 4.8% Homemakers, Not Employed
- 4.8% Retired

Education Levels:

- 52.4% Education beyond high school
- 9.5% Associate degree
- 11.9% Trade certified
- 2.4% Vocational training
- 7.1% Undergraduate degree
- 4.8% Postgraduate degree

Flexibility in the Workplace:

(by percent of interest)

- Cross-training - 77.8%
- Varied shifts (2nd, 3rd, & split) - 66.7%
- Job sharing - 50.0%
- Job teams - 83.3%
- Temporary work - 44.4%
- Seasonal work - 50.0%

Other Facts:

- 62.5% paid hourly wage
- 69.0% are/were employed full-time
- 7.1% are/were employed part-time
- 23.8% are/were self-employed
- 28.1% hold more than one job
- Currently working an average of 42 hrs/week

Current Benefits:

- Health/medical insurance - 84.2%
- Dental coverage - 47.4%
- Pension/retirement/401K - 42.1%
- Paid vacation - 36.8%
- Vision coverage - 36.8%
- Paid sick leave - 26.3%
- Paid holidays - 21.1%
- Life insurance - 15.8%

Desired Benefits:

(by percent of interest)

- Health/medical insurance - 100%
- Pension/retirement/401K - 25.0%
- Dental coverage - 25.0%
- Vision coverage - 12.5%

Top Advertising Media:

(for those seeking employment opportunities)

- Local/Regional Newspapers
 - Sioux City Journal
 - Omaha World-Herald
 - Onawa Democrat
 - Onawa Sentinel
- The Internet
 - www.monster.com
 - Company websites
- Networking through family, friends, acquaintances
- Local Iowa Workforce Development Centers

Potential Available Labor

Per Occupational Category:

Business Operations:

- Managers - 1,125
- Clerks & Secretaries - 937

Production:

- Supervisors - 373
- Automotive Technicians - 187
- Baggage Porters and Bellhops - 184
- Bartenders, Waiters, & Waitresses - 563
- Cashiers & Tellers - 374
- Child Care Workers - 375
- Clergy - 561
- Cooks & Food Preparers - 376
- Counselors - 185
- Engineering Technicians - 191
- Fitness Trainers & Aerobics Instructors - 183
- Heating & A/C Mechanics - 190
- Instructors & Teachers - 377
- Massage Therapists - 186
- Musical Instrument Repairers - 375
- Parking Lot Attendants - 187
- Occupational Health & Safety Specialists - 188
- Recreational Workers - 189
- Slot & Gaming Service Workers - 562

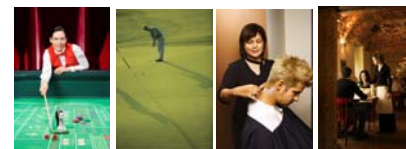
An estimated total of **7,868** people in the Laborshed area

Underemployment:

Total Underemployment - 7.1%

- Low hours - 0.0%
- Mismatch of skills - 2.4%
- Low income - 4.8%

IWD only counts individuals once when estimating Total Underemployment.



The Iowa Workforce Development Region (IWD) 12 aggregate wage data was also extracted from the Iowa Wage Survey and is provided in the table on page 2 which reflects mean, entry, experienced, and median wages.

Information was compiled by Iowa Workforce Development using 2008 Laborshed data.

Occupation	Occupational Code	Mean Wage	Entry Wage	Experienced Wage	Median Wage
Administrative Services Managers	11-3011	\$ 26.05	\$ 15.74	\$ 31.21	\$ 25.49
Amusement and Recreation Attendants	39-3091	\$ 8.23	\$ 6.42	\$ 9.14	\$ 7.05
Automotive Body and Related Repairers	49-3021	\$ 18.70	\$ 14.43	\$ 20.84	\$ 17.61
Automotive Service Technicians and Mechanics	49-3023	\$ 18.11	\$ 13.04	\$ 20.65	\$ 18.94
Bartenders	35-3011	\$ 8.34	\$ 7.18	\$ 8.91	\$ 8.22
Cashiers	41-2011	\$ 7.56	\$ 6.41	\$ 8.12	\$ 7.42
Chief Executives	11-1011	\$ 61.64	\$ 36.51	>\$70	\$ 56.00
Child Care Workers	39-9011	\$ 8.02	\$ 6.54	\$ 8.76	\$ 7.68
Clergy	21-2011	\$ 16.82	\$ 9.41	\$ 20.52	\$ 16.68
Coin, Vending, and Amusement Machine Servicers and Repairers	49-9091	\$ 13.54	\$ 12.52	\$ 14.05	\$ 13.37
Community and Social Service Specialists, All Other	21-1099	\$ 11.04	\$ 7.07	\$ 13.03	\$ 8.53
Counter and Rental Clerks	41-2021	\$ 10.64	\$ 6.65	\$ 12.63	\$ 9.72
Counter Attendants, Cafeteria, Food Concession, and Coffee Shop	35-3022	\$ 6.82	\$ 6.35	\$ 7.05	\$ 6.68
First-Line Supervisors/Managers of Food Preparation and Serving Workers	35-1012	\$ 14.46	\$ 9.66	\$ 16.86	\$ 13.77
First-Line Supervisors/Managers of Personal Service Workers	39-1021	\$ 15.15	\$ 10.82	\$ 17.32	\$ 12.01
Food Preparation Workers	35-2021	\$ 9.04	\$ 6.54	\$ 10.29	\$ 8.67
Food Servers, Nonrestaurant	35-3041	\$ 9.16	\$ 6.88	\$ 10.30	\$ 8.95
Hairdressers, Hairstylists, and Cosmetologists	39-5012	\$ 9.96	\$ 7.93	\$ 10.98	\$ 9.27
Hosts and Hostesses, Restaurant, Lounge, and Coffee Shop	35-9031	\$ 7.21	\$ 6.28	\$ 7.68	\$ 6.97
Managers, All Other	11-9199	\$ 33.82	\$ 11.27	\$ 45.09	\$ 30.94
Massage Therapists	31-9011	\$ 16.01	\$ 14.45	\$ 16.79	\$ 15.52
Musical Instrument Repairers and Tuners	49-9063	\$ 19.18	\$ 13.13	\$ 22.20	\$ 14.07
Occupational Health and Safety Specialists	29-9011	\$ 28.82	\$ 22.17	\$ 32.14	\$ 29.72
Office Clerks, General	43-9061	\$ 11.36	\$ 8.13	\$ 12.97	\$ 11.06
Preschool Teachers, Except Special Education	25-2011	\$ 9.06	\$ 6.54	\$ 10.32	\$ 7.62
Receptionists and Information Clerks	43-4171	\$ 10.42	\$ 7.61	\$ 11.81	\$ 10.45
Recreation Workers	39-9032	\$ 9.88	\$ 7.42	\$ 11.10	\$ 9.07
Substance Abuse and Behavioral Disorder Counselors	21-1011	\$ 14.85	\$ 12.86	\$ 15.85	\$ 14.17
Tellers	43-3071	\$ 10.26	\$ 8.30	\$ 11.24	\$ 9.90
Waiters and Waitresses	35-3031	\$ 6.93	\$ 6.33	\$ 7.23	\$ 6.64

This Iowa Wage Survey for the Iowa Workforce Development (IWD) Region 12 service area was produced by the Workforce Data & Business Development Bureau to provide communities local information on wages by occupation. This publication was developed specifically for the IWD Region 12 service area. The source of the wage and employment data is the 2007 Iowa Wage Survey. Additional data from the Iowa Wage Survey for individual counties, Iowa Workforce Development regions, and by industry statewide are available on the Iowa Workforce Development web site located at www.iowaworkforce.org.

For more information regarding the Monona County Laborshed Study contact:

Sara Struble, Executive Director
 Monona County Economic Development Partnership
 418 East Iowa Avenue
 P.O. Box 135
 Onawa, IA 51040
 Office: 712-433-4493
 Cell: 712-333-4281
 Fax: 712-433-2725
 Email: mcedp@longlines.com
www.mcedp.com

